



# PATTERN CHANGER VALVE

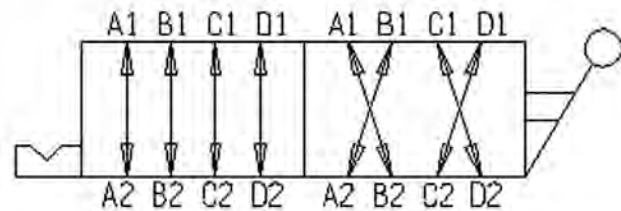


48

## PERFORMANCE

The OCUKAC2318 is intended for pilot applications only. Specific information about pressure drop may be obtained from Holmbury USA.

## SYMBOL



## INTRODUCTION

Holmbury's new Pattern Changer Valve is a mechanically operated valve with 4 inlet ports and 4 outlet ports. The Pattern Changer Valve allows for quick joystick pattern changes without switching hoses.

Holmbury's Pattern Changer Valve provides 8-way, 2 position control of pilot signals. It is designed to be used where switching pilot pressure patterns may be desirable.

Holmbury's Pattern Changer Valve eliminates the equipment downtime, labor and environmental hazards involved in switching hoses. It is also purely mechanical, making installation quick and easy while eliminating the possibility of an electronic failure resulting in undesirable machine response. There are 4 inlet ports and 4 outlet ports. User merely turns the handle 90 degrees to change the joystick pattern.

## FEATURES

- Compact
- Simple, reliable design – no electronics
- Easy to install
- Detent locks position into place

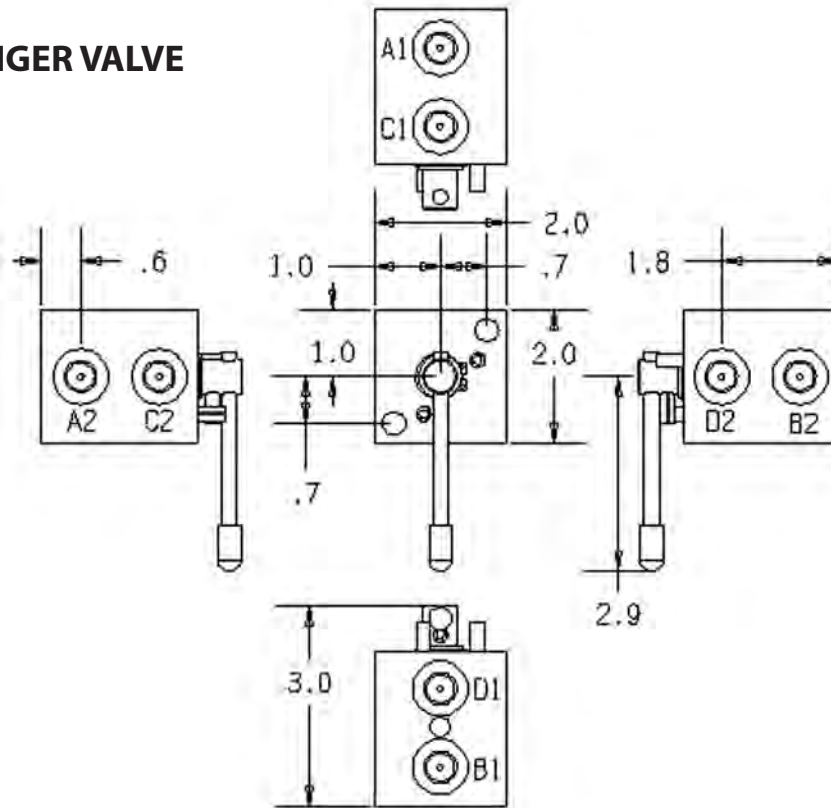
## CONSTRUCTION

- Rated Pressure – 3,000 PSI
- Rated Flow – Pilot
- Ports – SAE-4ORB (7/16-20)
- Weight – 2.4 lbs.
- Manifold Material – Steel
- Internal Parts – Ground/Hardened Steel

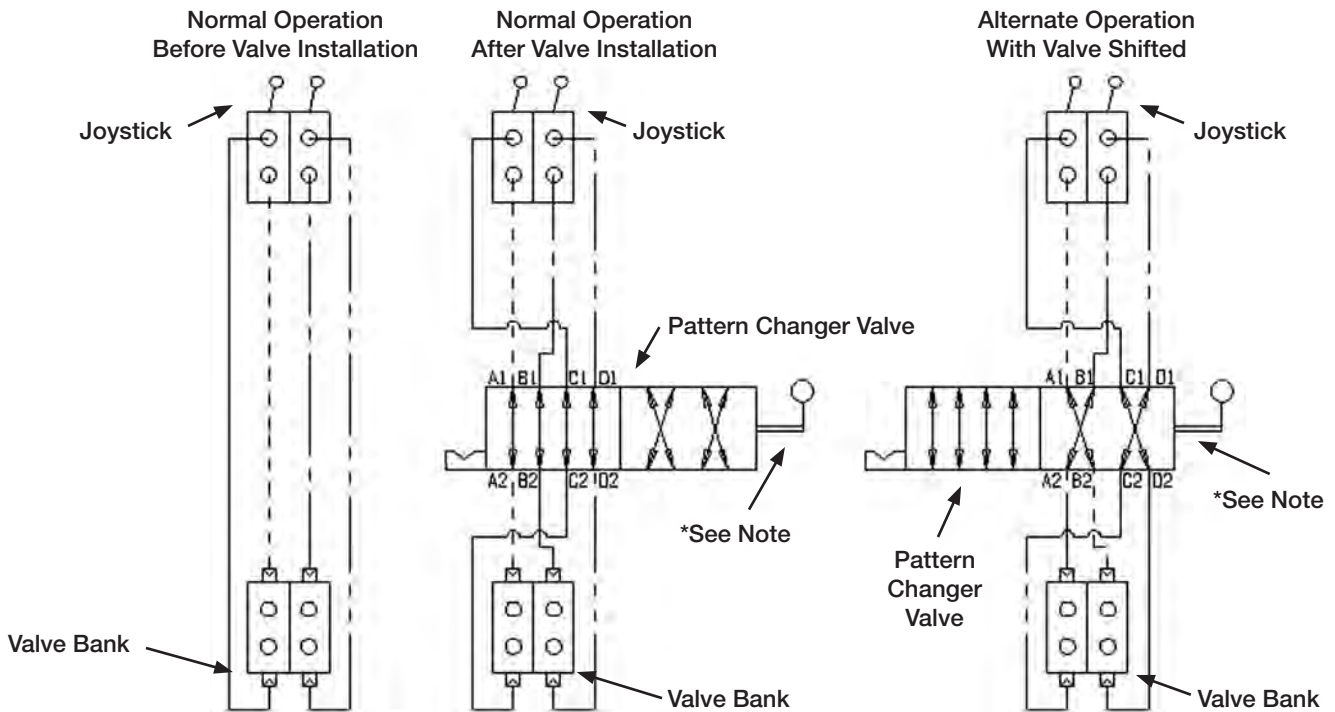


**Holmbury**

**PATTERN CHANGER VALVE**



**Pattern Changer Valve: Installation & Operational Diagram**



**\*NOTE:**

Rotate valve handle 90 degrees to change joystick pattern.

**NOTE:** All dimensions are for reference only. Contact Holmbury for certified dimensions. Holmbury's Pattern Changer Valve is intended for pilot applications only. Contact Holmbury regarding specific information about pressure drop.