

# HCP SERIES

## MALE COUPLINGS

**'FOR CONNECTION UNDER  
STATIC PRESSURE CONDITIONS'**

### INTRODUCTION

Holmbury HCP Series Male Couplings will connect, by hand, with pressures up to 350 bar locked in the male half, without releasing any fluid to the environment. The hose line to the female will need to be at zero pressure to allow the HCP Male to operate correctly.

### CONNECTION

Conforms to ISO 16028 connection sizes. They will connect with Holmbury HQ Series females.

#### Examples:

HCP 10 connects with HQ10 couplings.  
HCP 12 connects with HQ12 couplings.  
HCP 19 connects with HQ19 couplings.

### ISO 16028

HCP Series Male Couplings are compliant with ISO 16028 and will therefore connect with female couplings that also comply with this standard.

### APPLICATIONS

Mobile plant and attachments where exposure to the sun causes pressure to develop due to thermal expansion of trapped fluid.

### ADVANTAGES

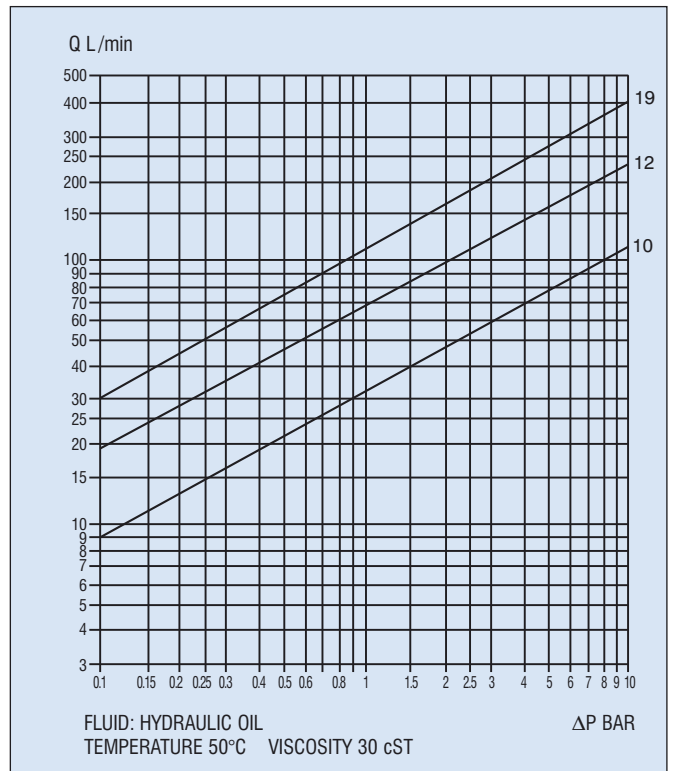
- ★ Connects under high pressure, by hand.
- ★ Flat faces can easily be wiped clean before connection to prevent the ingress of contaminants into the circuit.
- ★ No air intrusion during connection.
- ★ Clean disconnection - non-spill design.
- ★ Locking sleeve helps prevent accidental disconnection.
- ★ Coupling can rotate whilst connected.
- ★ Bi-directional flow

### SPECIFICATION

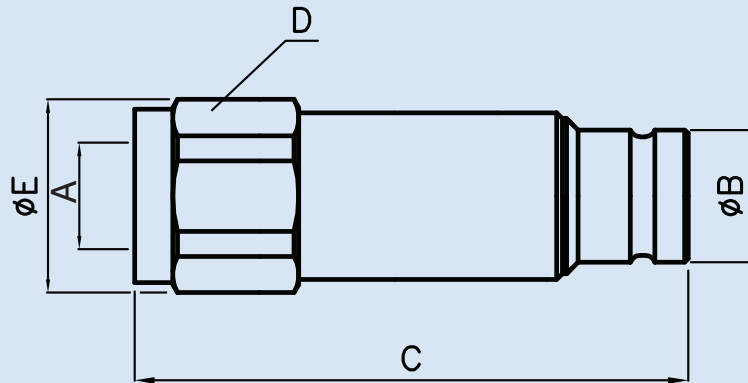
- ★ Operating temperature range: -20°C to +100°C.
- ★ Fluid loss during disconnection: 0 to 0.02ml.
- ★ Maximum pressure for connection by hand: 350 bar in male, zero pressure in female.



### PRESSURE DROP CHARACTERISTICS



## HCP SERIES MALE COUPLINGS



### DIMENSIONS

Type and size	Nominal diameter of hose	A	ØB	ØC	D
HCP 10	10	3/8"	19.8	87	30
HCP 10	10	1/2"	19.8	90	30
HCP 12	12	1/2"	24.5	98	41
HCP 12	12	3/4"	24.5	104	41
HCP 19	19	3/4"	30	114	46
HCP 19	19	1"	30	114	46

### PRESSURE RATINGS

Type and size	Maximum working pressure coupled to HQ Series female	Burst pressure coupled to HQ Series female	Burst pressure HCP Male
HCP 10	350	1500	1500
HCP 12	350	1500	1400
HCP 19	350	1450	1450

### MATERIALS

Zinc nickel plated steel, PTFE and nitrile seals.

### OPERATION

To connect: wipe the mating surfaces clean, align the couplings and push together. Twist the outer sleeve on the female and the coupling is locked.

To disconnect: ensure the hose line is at zero pressure, twist the sleeve to align its notch with the locking ball. Pull back the sleeve and the coupling springs apart.

### ORDER CODES

<b>HCP 10 – M – 08 G</b>		
<b>HCP</b> = Series type		Any other necessary information
<b>Body Size</b> 10, 12 or 19		<b>Blank</b> = PTFE and nitrile seals
<b>M</b> = Male coupling		<b>Blank</b> = female thread <b>M</b> = Male thread
<b>Thread size based on dash system</b> 06 = 3/8" 08 = 1/2" 12 = 3/4" 16 = 1"		<b>Thread form</b> <b>G</b> = BSP P <b>N</b> = NPT F <b>S</b> = SAE
		<b>Example: HCP 19-M-16G</b> HCP Series male coupling, body size 19, 1" BSP female thread, PTFE and nitrile seals